



HIGH SECURITY MADE SIMPLE

Smart Pucklock Security Solutions

Protect and control access to cabinets, generators, gates, and enclosures using SES's keyless Smart Pucklock. The SES's patented Bluetooth® Smart Pucklock, smartphone & tablet application and enterprise cloud software, provide efficient, secure, and authorized access to remote sites anywhere in the world.

SECURING CELL SITE CABINETS AND ENCLOSURES

SES provides high security protection for remotely located cabinets, generators, gates, and enclosures with its patented Bluetooth® Smart Pucklock. No other portable security solution compares to the extreme security and durability of the Smart Pucklock's robust hidden shackle design and hardened steel body.

With the SES Smart Pucklock, enclosure access is remotely granted to authorized technicians via their smartphone or tablet using SES's enterprise software and military-grade Bluetooth® encryption, which seamlessly integrates with customer's enterprise systems and workflow processes. Real-time and historic site access data is generated to assist with efficient asset management and improved operations. This cost-effective high security solution can be quickly retrofitted to existing enclosures for immediate use.

BLUETOOTH® SMART PUCKLOCK AND HASP HIGH SECURITY SOLUTIONS

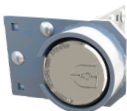
The SES Smart Pucklock and hasp security solution consists of the Smart Pucklock as well as various types of hasps for most enclosure configurations.



BLUETOOTH® SMART PUCKLOCK



CABINET CORNER PUCKLOCK HASP



CABINET CORNER SPLIT PUCKLOCK HASP



CABINET OVER HANDLE PUCKLOCK HASP

KEY FEATURES

- Shield icon Military-grade Bluetooth® Communications with Smartphones and Tablets
- Shield icon Secures Cabinets, Generators, Gates, and Enclosures
- Shield icon Vastly More Secure than External Shackle Padlocks
- Shield icon Hidden Shackle Design and Hardened Steel Body Renders Bolt and Lock Cutters Useless
- Shield icon Environmentally Sealed from Debris, Water, and Extreme Temperatures
- Shield icon Compatible with Standard and Cabinet Pucklock Hasps as well as Various Padlock Hasps

KEY BENEFITS

- Shield icon Reduce Field Service Cost
- Shield icon Decrease Theft & Vandalism
- Shield icon Eliminate Burdensome Key Management
- Shield icon Prevent False Intrusion Alarms

SMART PUCKLOCK

PHYSICAL	<ul style="list-style-type: none"> • Dimensions: Diameter 2.92", Height 1.52" • Shackle Diameter: 0.38" • Weight: 25 OZ
HASP COMPATIBILITY	<ul style="list-style-type: none"> • Standard Pucklock Hasps • SES Cabinet Corner Hasp • Various External Shackle Padlock Hasps
POWER	<ul style="list-style-type: none"> • 3.0V CR2 Lithium Primary Battery • Low-Battery Warning via SES Smart Phone Application (mIAS) • External USB-C Connector for Extreme Cold or Low-Battery Operation • Internal Battery
BATTERY LIFE	<ul style="list-style-type: none"> • 5+ Years or 2,000 Cycles Note - Extreme Cold Operation may Reduce Battery Life
COMMUNICATIONS	<ul style="list-style-type: none"> • Low Energy Bluetooth® (BLE) 4.0 • SES Smart Phone Application (mIAS) • Identity & Access Software (IAS)
ENVIRONMENTAL	<ul style="list-style-type: none"> • Operating Temperature Range: -40°C to 60°C (-40°F to 140°F) • Storage Temperature: -20°C to 60°C (-4°F to 140°F) • Humidity: 10 to 95% Relative Humidity, Condensing • Water Resistance: Heavy and Blowing Rain (mounted), Not Submersible • Chemical Resistance: Resists Damage from Common Materials and Hydrocarbons such as Perspiration, Oil, Grease, and Standard Cleaning Fluids
SMARTPHONES	<ul style="list-style-type: none"> • Android OS 4.3 or higher • iOS 9.0 or higher
REGULATORY COMPLIANCE	<ul style="list-style-type: none"> • Bluetooth® FCC ID: QOQBLE112 • United States (FCC): Complies with Part 15 of the FCC Rules • Canada (IC): Complies with Industry Canada License-exempt RSS Standards

ABOUT SECURITY ENHANCEMENT SYSTEMS

SES provides highly innovative end-to-end remote access solutions that deliver significant field service efficiency improvements while reducing risk and protecting critical infrastructure assets. SES's security products currently protect tens of thousands of geographically dispersed sites while seamlessly integrating with customers' enterprise data, alarm systems, and internal processes. SES's software, electronics, and high-security locks give authorized users on-demand and time-limited access to remote assets, thereby maintaining unprecedented levels of security and helping operations understand the who, when, where and why of every site visit - all from their smartphone.



SECURITY ENHANCEMENT SYSTEMS, LLC

3176 MacArthur Blvd | Northbrook, IL 60062

833.737.5625 | securityesys.com | sales@securityesys.com