


Cabinet Blocker Data Sheet

HIGH SECURITY INTERNAL CABINET LOCKING HARDWARE

Secure access to remote cabinet sites with SES's high security internal locking hardware. As part of SES's robust, yet flexible end-to-end solutions, the Cabinet Blocker hardware integrates with SES's line of certified Access Control Units, smartphone & tablet application and enterprise software providing efficient, secure, and authorized access to remote cabinet sites anywhere in the world.

KEY FEATURES

ROBUST CABINET SECURITY FUNCTIONALITY

-  Integrates with SES's Access Control Units and Most Cabinet Enclosures
-  Performance Engineered for Rugged Environmental Conditions
-  NEBS, UL, RoHS, and NEMA Tested
-  Installed On-site or During Manufacturing Process
-  Small Surface Mount Footprint that Fits Inside Cabinets

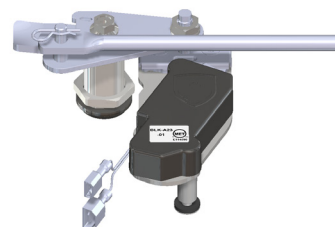
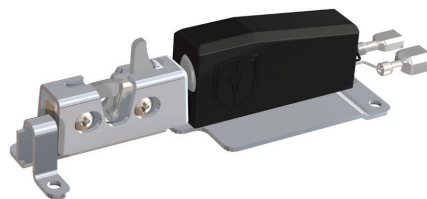
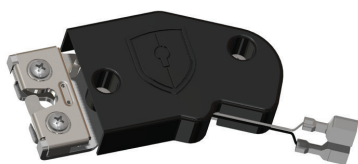
KEY BENEFITS

MORE EFFICIENT OPERATIONS

Understand the who, when, where and why of every cabinet site visit with data driven insights that improve field service operational efficiencies.

PROTECTION UNMATCHED IN THE INDUSTRY

The SES Cabinet Blocker hardware is engineered for high security remote cabinet solutions as it is installed inside the enclosure concealed from external breach points.

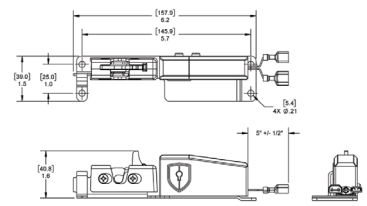


ABOUT SECURITY ENHANCEMENT SYSTEMS

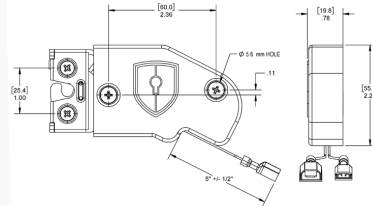
SES provides highly innovative end-to-end remote access solutions that deliver significant field service efficiency improvements while reducing risk and protecting critical infrastructure assets. SES's security products currently protect tens of thousands of geographically dispersed sites while seamlessly integrating with customers' enterprise data, alarm systems and internal processes. SES's software, electronics and high security locks give authorized users on-demand and time-limited access to remote assets, thereby maintaining unprecedented levels of security and helping operations understand the who, when, where and why of every site visit - all from their smartphone.

CABINET BLOCKERS

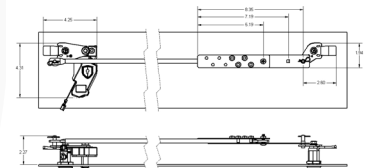
	BLK-A13	BLK-A23	BLK-K09
PHYSICAL (1)(3)	<ul style="list-style-type: none"> • Surface Mount • Weight: 6.6 oz • Material: SS Latch Assembly • 44.5 N Typical Load 	<ul style="list-style-type: none"> • Surface Mount • Weight: 4.2 oz • Material: SS Latch Assembly • 44.5 N Typical Load 	<ul style="list-style-type: none"> • Surface Mount • Weight: 21 oz • Material: SS, Aluminum, Zinc Plated Steel • 44.5 N Typical Load
MOUNTING	<ul style="list-style-type: none"> • 4 x 5.4mm thru Holes • Striker Bolt Diameter = 6mm +/- 0.1mm 	<ul style="list-style-type: none"> • 2 x 5.6mm thru Holes • Striker Bolt Diameter = 6mm +/- 0.1mm 	<ul style="list-style-type: none"> • 2 x 5.6mm thru Holes • Also utilizes existing 1/4 turn hardware • Striker Bolt Diameter = 6mm +/- 0.1mm
APPLICATION	<ul style="list-style-type: none"> • Hex Rod (4) 	<ul style="list-style-type: none"> • Flat or Round Rod (5)(6) 	<ul style="list-style-type: none"> • Rear Panel 1/4 Turn "E5" Latches. Adjustable for the following latch spacing (7): 25.97", 24.132", 29.132"



BLK-A13



BLK-A23



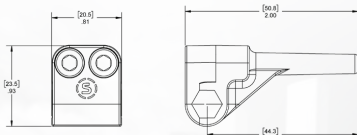
BLK-K09

COMMON SPECIFICATIONS

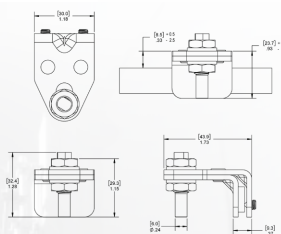
INPUT POWER	• 12VDC @ 2W
ELECTRICAL CONNECTIONS	<ul style="list-style-type: none"> • Black Wire: Male TE P/N 2-520103 • White Wire: Female TE P/N 2-520184
WIRE	<ul style="list-style-type: none"> • 22AWG UL1007 • White Wire: Unlock (Positive), Lock (Negative) • Black Wire: Unlock (Negative), Lock (Positive)
ENVIRONMENTAL (5)	<ul style="list-style-type: none"> • Operating Temperature -20°C to 70°C • IP65
CERTIFICATIONS	<ul style="list-style-type: none"> • UL294 • MET-C Listed File E114590 (2)

BLOCKER STRIKERS

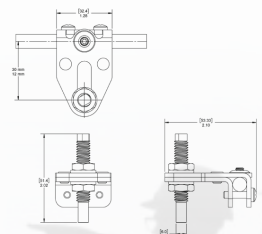
	HEX ROD STRIKER (BLK-M15)	FLAT ROD STRIKER (BLK-M16)	ROUND ROD STRIKER (BLK-M17)
PHYSICAL	<ul style="list-style-type: none"> • Mounts on Standard M3 Hex Rod • Weight: 0.8 oz • ZMAK 3 Striker and Clamp • Striker Bolt Diameter = 6mm 	<ul style="list-style-type: none"> • Mounts on Standard A5 Flat Rod • Weight: 2.8 oz • Zinc Plated Steel Clamp • Striker Bolt Diameter = 6mm 	<ul style="list-style-type: none"> • Mounts on Standard A5 Round Rod • Weight: 2.8 oz • Zinc Plated Steel Clamp • Striker Bolt Diameter = 6mm
MOUNTING	<ul style="list-style-type: none"> • 2x Screws - 3 Nm Max Torque 	<ul style="list-style-type: none"> • 2x Set Screws - 3 Nm Max Torque • 2 x M8 Nuts - 8 Nm Max Torque 	<ul style="list-style-type: none"> • 1x Set Screws - 1 Nm Max Torque • 2x Screws - 3 Nm Max Torque • 2 x M8 Nuts - 8 Nm Max Torque



BLK-M15



BLK-M16



BLK-M17

- (1) 3D CAD Files Available Upon Request
 (2) Controlled by an SES Access Control Unit
 (3) Not Intended for Direct Exposure to Outdoor Elements
 (4) For Hex Rod Applications, use Blocker BLK-A13 with Striker BLK-M15

- (5) For Flat Rod Applications, use Blocker BLK-A23 with Striker BLK-M16
 (6) For Round Rod Applications, use Blocker BLK-A23 with Striker BLK-M17
 (7) Utilizes BLK-A23 as part of BLK-K09 hardware kit



SECURITY ENHANCEMENT SYSTEMS, LLC

3176 MacArthur Blvd | Northbrook, IL 60062

833.737.5625 | securityesys.com | sales@securityesys.com

Confidential Information | SES - R2107011