



HIGH SECURITY MADE SIMPLE

# High Security Vault Data Sheet

SMART SECURITY FOR ANY REMOTE SITE

The SES High Security Vault (HSV) is a rugged and secure storage solution for keys, fobs, access cards and tools required to access sites, even in the most challenging environments. In order to protect your assets, the HSV is engineered to resist intrusion attempts that occur at remote, unattended locations.

The HSV can be quickly secured onto a building, cabinet or other structure.

## KEY BENEFITS

### MORE EFFICIENT OPERATIONS

Understand the who, what, where and how of every site visit. Our High Security Vault communicates with the SES security platform to offer insights that help you work more efficiently in the field.

### PROTECTION YOU CAN COUNT ON

No matter the weather, temperature or abuse, the budget-friendly High Security Vault is engineered to perform. Use our smartphone app to provide on-demand access to authorized personnel, while protecting assets against unauthorized intrusions in remote areas – all with complete audit trail capabilities.

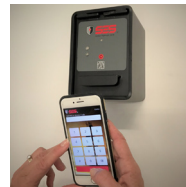


## OPERATION

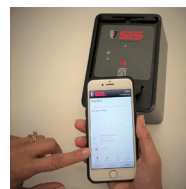


### 1. WAKE UP HSV

LED Slow Blinks



### 2. ENTER CREDENTIALS



### 3. SELECT HSV & UNLOCK

2-Beeps & 2-LED Blinks



### 4. OPEN HSV



### 5. SHUT, PRESS & HOLD BUTTON 2 SEC TO RELOCK

1-Beep & 1-LED Blink

## KEY FEATURES

-  Military Grade Encryption
-  High-Strength Steel Construction
-  Intrusion-Resistant Internal Attributes
-  Long-Lasting Battery & Cycle Count
-  Easy Wall or Door Mounting
-  Large Internal Capacity
-  Audit Trail

# HIGH SECURITY VAULT (HSV SPECIFICATIONS)

<b>PHYSICAL</b>	<ul style="list-style-type: none"> <li>• <b>Dimensions:</b> W5", H5", D7"</li> <li>• <b>Internal Volume:</b> 105 Cubic Inches</li> <li>• <b>Weight:</b> 13.2 lbs (6.0kg)</li> </ul>	<p><b>MOUNTING HOLE LOCATIONS</b></p>
<b>MOUNTING</b>	<ul style="list-style-type: none"> <li>• 4x - 0.26" Holes for 0.25" Screws &amp; 0.75" Washer</li> <li>• 1x LB-M15 Gasket 3/16" Closed Cell EPDM</li> </ul>	
<b>POWER</b>	<ul style="list-style-type: none"> <li>• 2x 3V Lithium-Ion Cells, No Maintenance</li> <li>• Low-Battery Warning via Smart Phone Application (mIAS)</li> <li>• External 9V Battery Jumper for Emergency</li> </ul>	
<b>LIFE</b>	<ul style="list-style-type: none"> <li>• &gt; 10 Years &amp; 10,000 Cycles*</li> </ul>	
<b>COMMUNICATIONS</b>	<ul style="list-style-type: none"> <li>• Bluetooth 4.0, Range &gt; 3.3ft (1.0m)</li> <li>• SES Smart Phone Application (mIAS)</li> <li>• Identity &amp; Access Software (IAS)</li> </ul>	
<b>ENVIRONMENTAL</b>	<ul style="list-style-type: none"> <li>• <b>Operating Temperature:</b> -30°C to 60°C (-22°F to 140°F)</li> <li>• <b>Storage Temperature:</b> -10°C to 40°C (14°F to 104°F)</li> <li>• <b>Humidity:</b> 10 to 95% Relative Humidity, Condensing</li> <li>• <b>Water Resistance:</b> Heavy and Blowing Rain (mounted), Not Submersible</li> <li>• <b>Chemical Resistance:</b> Resists damage from common materials and hydrocarbons such as perspiration, oil, grease and standard cleaning fluids</li> </ul>	
<b>CERTIFICATIONS</b>	<ul style="list-style-type: none"> <li>• <b>Safety:</b> UL294</li> <li>• <b>High Temperature:</b> MIL-STD-810G Method 501.5 High Temperature</li> <li>• <b>Low Temperature:</b> MIL-STD-810G Method 502.5 Low Temperature</li> <li>• <b>Rain &amp; Blowing Rain:</b> MIL-STD-810G Method 506.5 Procedure I, Blowing Rain</li> <li>• <b>Sand &amp; Dust:</b> MIL-STD-810G Method 510.5 Procedure I, 60C</li> <li>• <b>Humidity:</b> MIL-STD-810G Method 507.5 Procedure II, Aggravated</li> <li>• <b>Vibration:</b> MIL-STD-810G Method 514.6 Cat 4, Unrestrained Cargo</li> <li>• <b>Shock:</b> MIL-STD-810G Method 516.6 Procedure IV, Transit Drop</li> </ul>	
<b>REGULATORY COMPLIANCE</b>	<ul style="list-style-type: none"> <li>• <b>Bluetooth FCC ID:</b> QOQBLE112</li> <li>• <b>United States (FCC):</b> Complies with Part 15 of the FCC Rules</li> <li>• <b>Canada (IC):</b> Complies with Industry Canada license-exempt RSS Standards</li> </ul>	

\* Extreme cold weather operation may reduce battery life

## ABOUT SECURITY ENHANCEMENT SYSTEMS

SES provides highly innovative end-to-end remote access solutions that deliver significant field service efficiency improvements while protecting critical infrastructure and remote assets. SES's security products currently protect tens of thousands of geographically dispersed sites while seamlessly integrating with customers' enterprise data, alarm systems and internal processes.

SES's software, electronics and physical locks give users on-demand and time-limited access control over remote assets, maintaining unprecedented levels of security and helping managers understand the who, what, where and when of every site visit - all from their smartphone!



**SECURITY ENHANCEMENT SYSTEMS, LLC**

3176 MacArthur Blvd | Northbrook, IL 60062

833.737.5625 | securityesys.com | sales@securityesys.com

